

## MEMORANDUM

**To:** Antwerp Township Planning Commission  
**Date:** July 19, 2017  
**From:** David M. Jirousek, AICP; Maxwell K. Dillivan, AICP  
**RE:** **Parks and Recreation- August 6 Open House**

### Station Setup

1. Welcome Station
  - a. Sign-in.
  - b. Purpose.
  - c. Plan goals.
2. Township and Regional Parks
  - a. What parks do you visit?
  - b. What improvements are needed?
  - c. What expansions are needed?
  - d. Are there new potential park sites?
  - e. Are there lands important to preserve?
3. Pathway and Trail Plans
  - a. What are your favorite trails?
  - b. Where are the most important connections? What type of facility (off road, on road, sidewalk, etc.)?
4. Community Input Board
  - a. What is your favorite activity?
  - b. What amenities and facilities do you want in Antwerp Township?

Please do not hesitate to contact me with questions or concerns at 616-988-3525 or by email at [jjirousek@williams-works.com](mailto:jjirousek@williams-works.com).

Map One

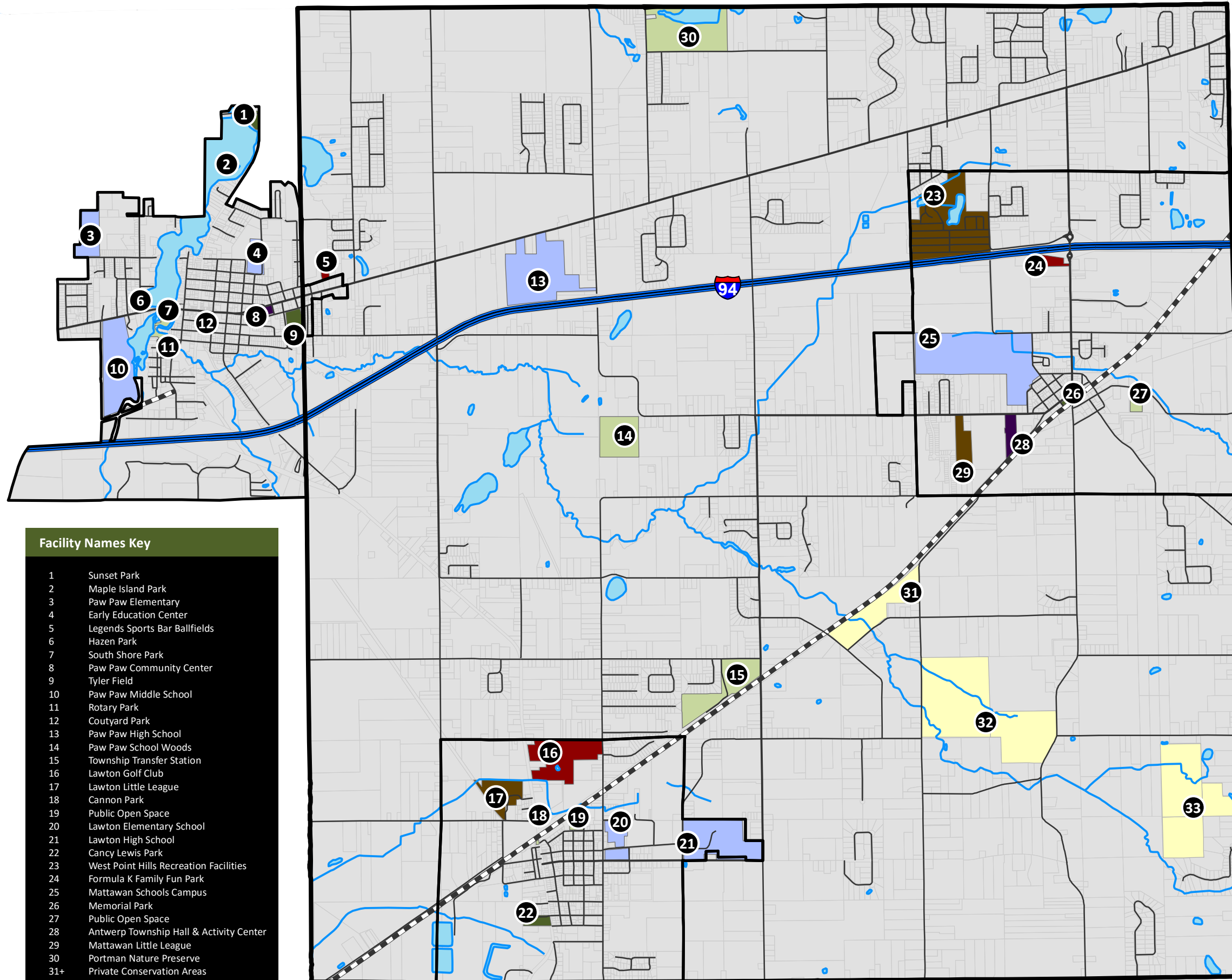
# Township Parks

Including the Village of Paw Paw

Antwerp Township  
Van Buren County, MI  
2017 Parks and Recreation Plan

## Park and Facility Types

-  Parks
-  Schools
-  Public Facilities
-  Public Open Spaces
-  Private Conservation
-  Non-Commercial Recreation
-  Commercial Recreation



### Facility Names Key

- 1 Sunset Park
- 2 Maple Island Park
- 3 Paw Paw Elementary
- 4 Early Education Center
- 5 Legends Sports Bar Ballfields
- 6 Hazen Park
- 7 South Shore Park
- 8 Paw Paw Community Center
- 9 Tyler Field
- 10 Paw Paw Middle School
- 11 Rotary Park
- 12 Coutyard Park
- 13 Paw Paw High School
- 14 Paw Paw School Woods
- 15 Township Transfer Station
- 16 Lawton Golf Club
- 17 Lawton Little League
- 18 Cannon Park
- 19 Public Open Space
- 20 Lawton Elementary School
- 21 Lawton High School
- 22 Cancy Lewis Park
- 23 West Point Hills Recreation Facilities
- 24 Formula K Family Fun Park
- 25 Mattawan Schools Campus
- 26 Memorial Park
- 27 Public Open Space
- 28 Antwerp Township Hall & Activity Center
- 29 Mattawan Little League
- 30 Portman Nature Preserve
- 31+ Private Conservation Areas



Data Sources: MCGI,  
Southwest MI Regional  
Planning Commission,  
LSL Planning, Inc.

**williams&works**  
engineers | surveyors | planners

# Regional Parks

Including the Village of Paw Paw

Antwerp Township  
Van Buren County, MI  
2017 Parks and Recreation Plan



- Nature Preserves
- State Parks
- Golf Courses
- Ski Resorts
- Campgrounds
- Other Recreation Facilities
- Cities
- Villages
- Antwerp Township
- Townships

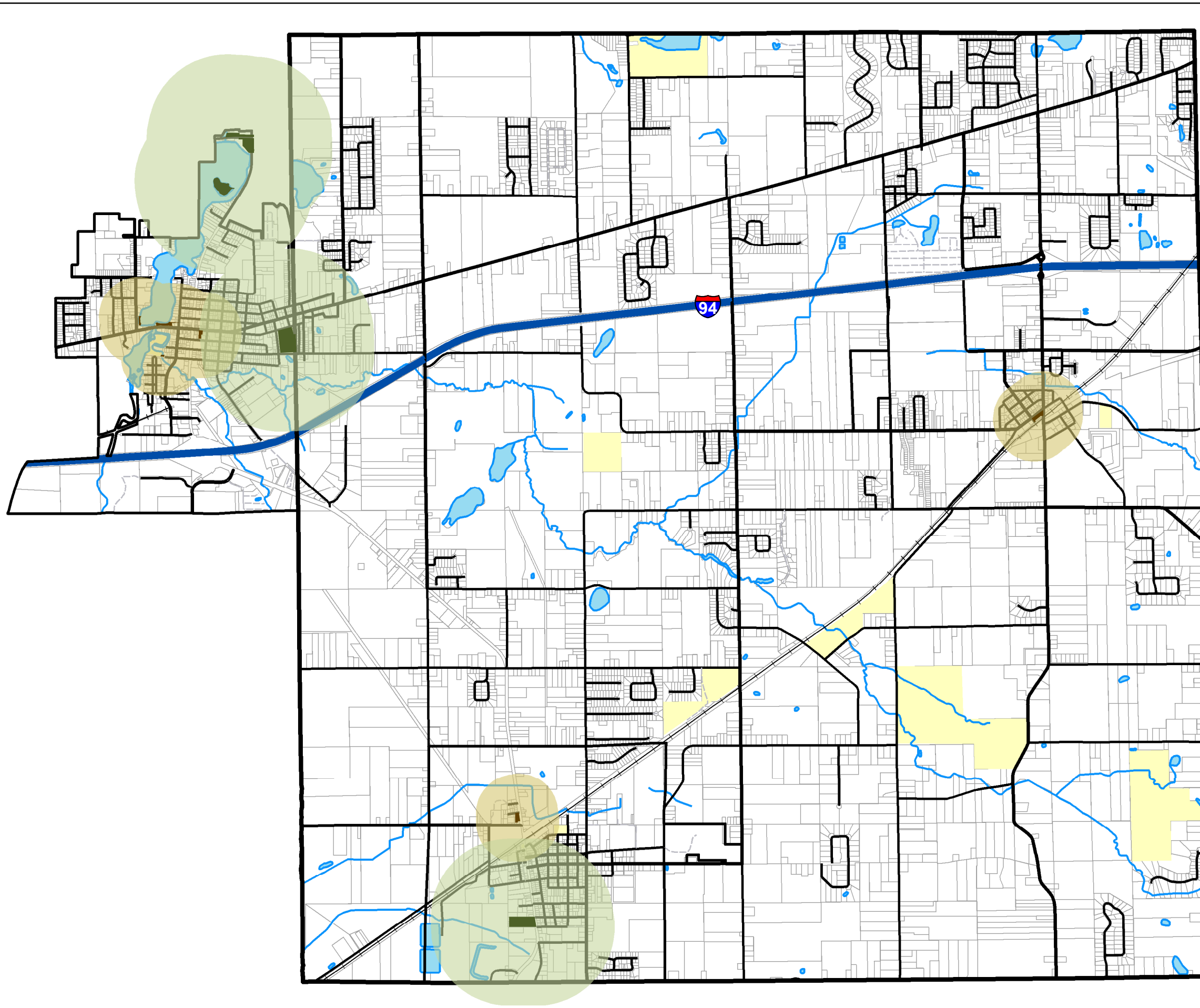


Map Three

# Park Service Areas

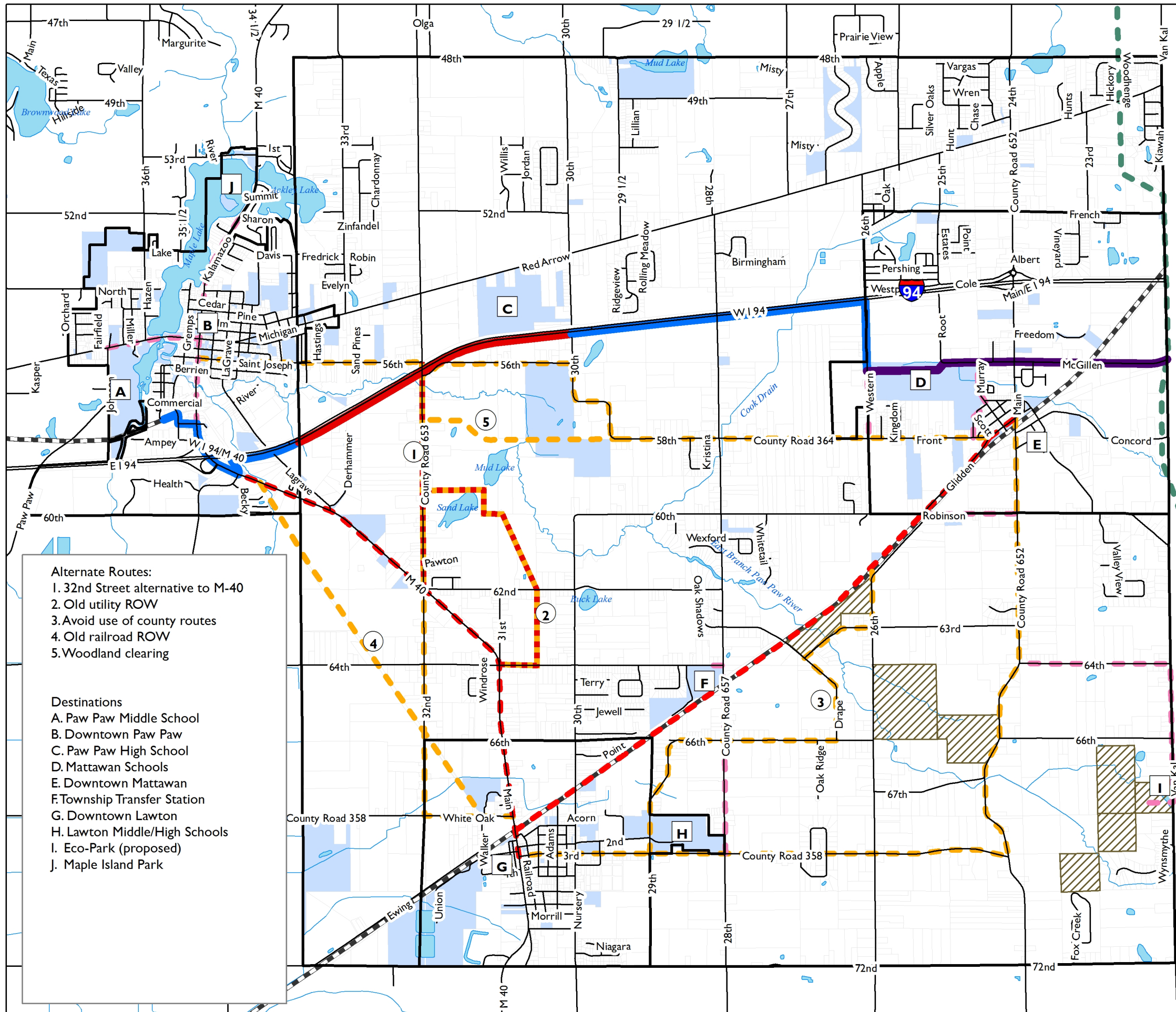
Including the Village of Paw Paw

Antwerp Township  
Van Buren County, MI  
2017 Parks and Recreation Plan



-  Area served by Neighborhood Park (1/2 mile radius)
-  Area served by Mini Park (1/4 mile radius)
-  Neighborhood Parks
-  Mini Parks
-  Natural Resource Areas  
Private Conservation Areas + Public Open Spaces





Map Six

# Proposed Pathways

Including the Village of Paw Paw

Antwerp Township  
 Van Buren County, MI  
 2017 Parks and Recreation Plan

**Top Priority Pathways**

- █ Proposed Phase 1
- █ Future Phase 2
- █ Future Mattawan Trail

**Future Proposed Pathways**

- - - Proposed Main Route
- - - Future Loop
- - - Alternate Proposed Routes
- - - Potential Regional Trail
- - - Spurs to Other Routes/Sites
- Property in Conservation
- Public/Quasi-Public Property
- Waterways

- Alternate Routes:**
1. 32nd Street alternative to M-40
  2. Old utility ROW
  3. Avoid use of county routes
  4. Old railroad ROW
  5. Woodland clearing

- Destinations**
- A. Paw Paw Middle School
  - B. Downtown Paw Paw
  - C. Paw Paw High School
  - D. Mattawan Schools
  - E. Downtown Mattawan
  - F. Township Transfer Station
  - G. Downtown Lawton
  - H. Lawton Middle/High Schools
  - I. Eco-Park (proposed)
  - J. Maple Island Park



Data Sources: MCGI,  
 Southwest MI Regional  
 Planning Commission,  
 Williams & Works

